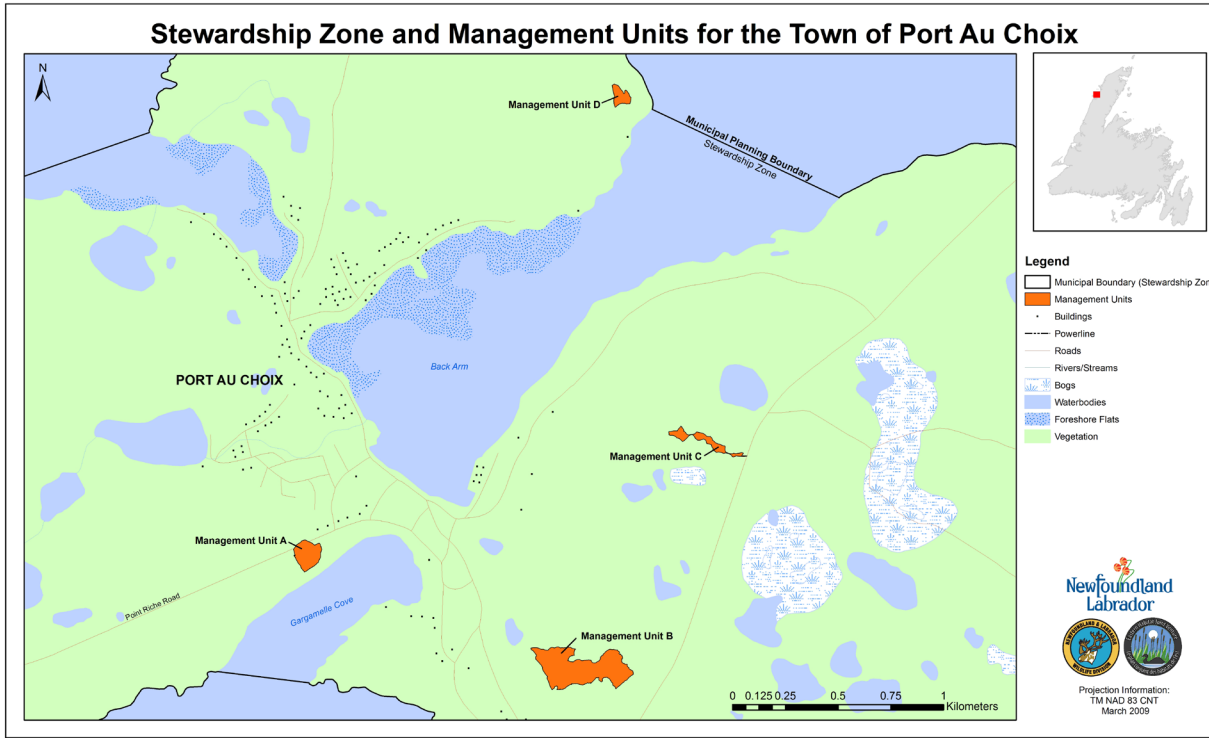


# Port au Choix **Species at Risk** Stewardship Agreement

The Town of Port au Choix and the Government of Newfoundland and Labrador signed a **SPECIES AT RISK STEWARDSHIP AGREEMENT** in 2009, committing to the conservation and enhancement of wildlife habitat within the town's planning boundaries.

The Port au Choix Stewardship Zone contains the limestone barren habitat areas located within the municipal border. Three species that live in the barrens are found nowhere else in the world: Long's braya, Fernald's braya and Barrens willow. There are 4 Management Units within the Stewardship Zone totaling 11.44 acres.



## The Limestone Barrens



## What to look for!



Fernald's Braya



Arctic Blatterpod

